

219 King Street

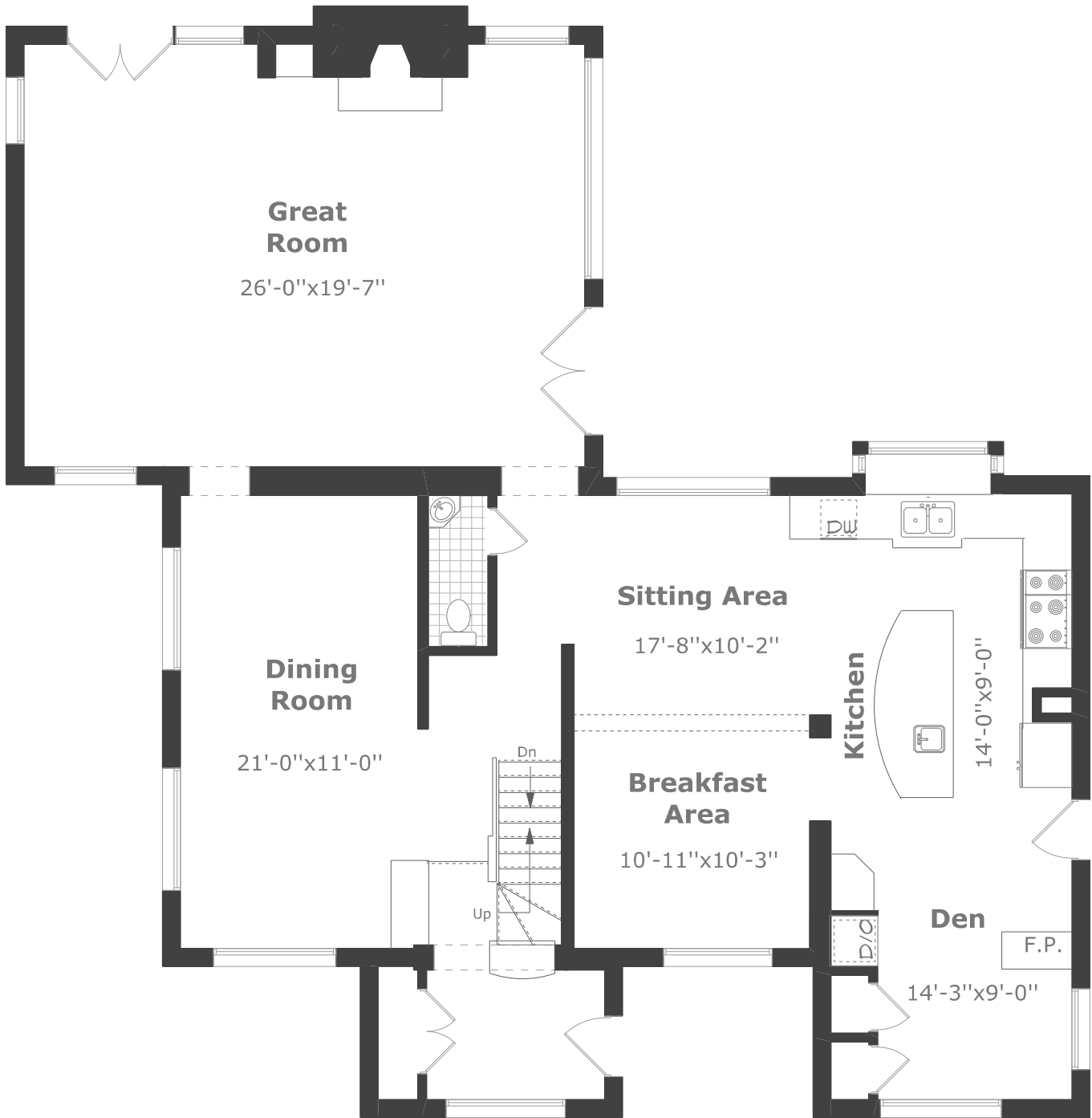
Scale (ft)



Scale (M)



March 2013



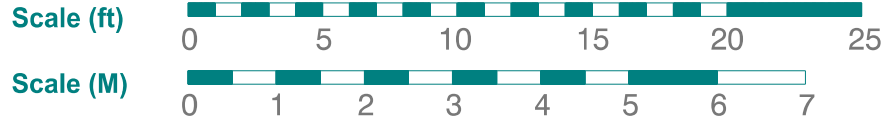
Main Floor Plan

1,730.8 sq. ft.

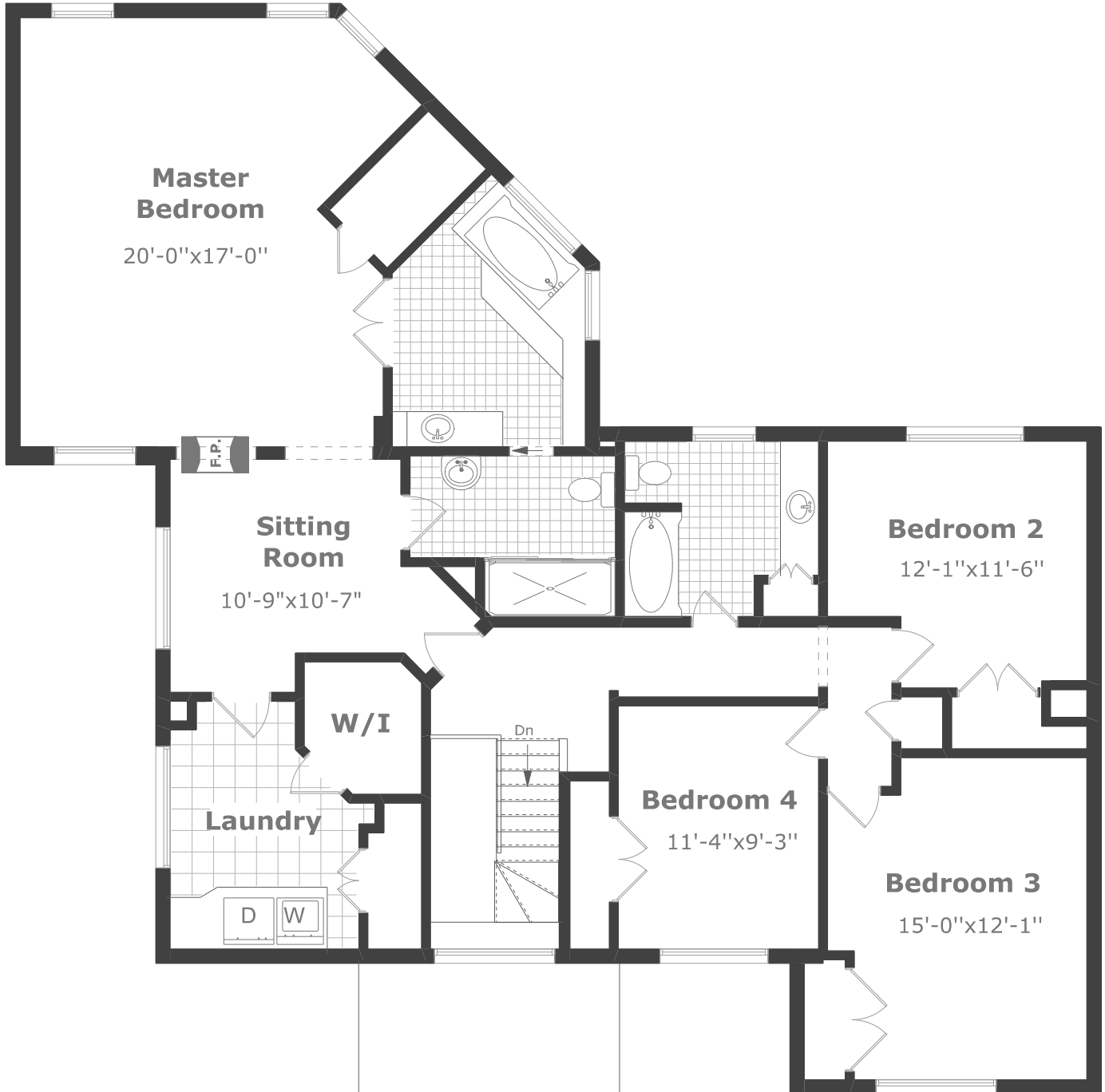


Measurements may not be 100% accurate. Floor Plans provided for illustrative purposes only. Room sizes not used to calculate area.

219 King Street



March 2013



2nd Floor Plan

1,675.4 sq. ft.



Measurements may not be 100% accurate. Floor Plans provided for illustrative purposes only. Room sizes not used to calculate area.

219 King Street

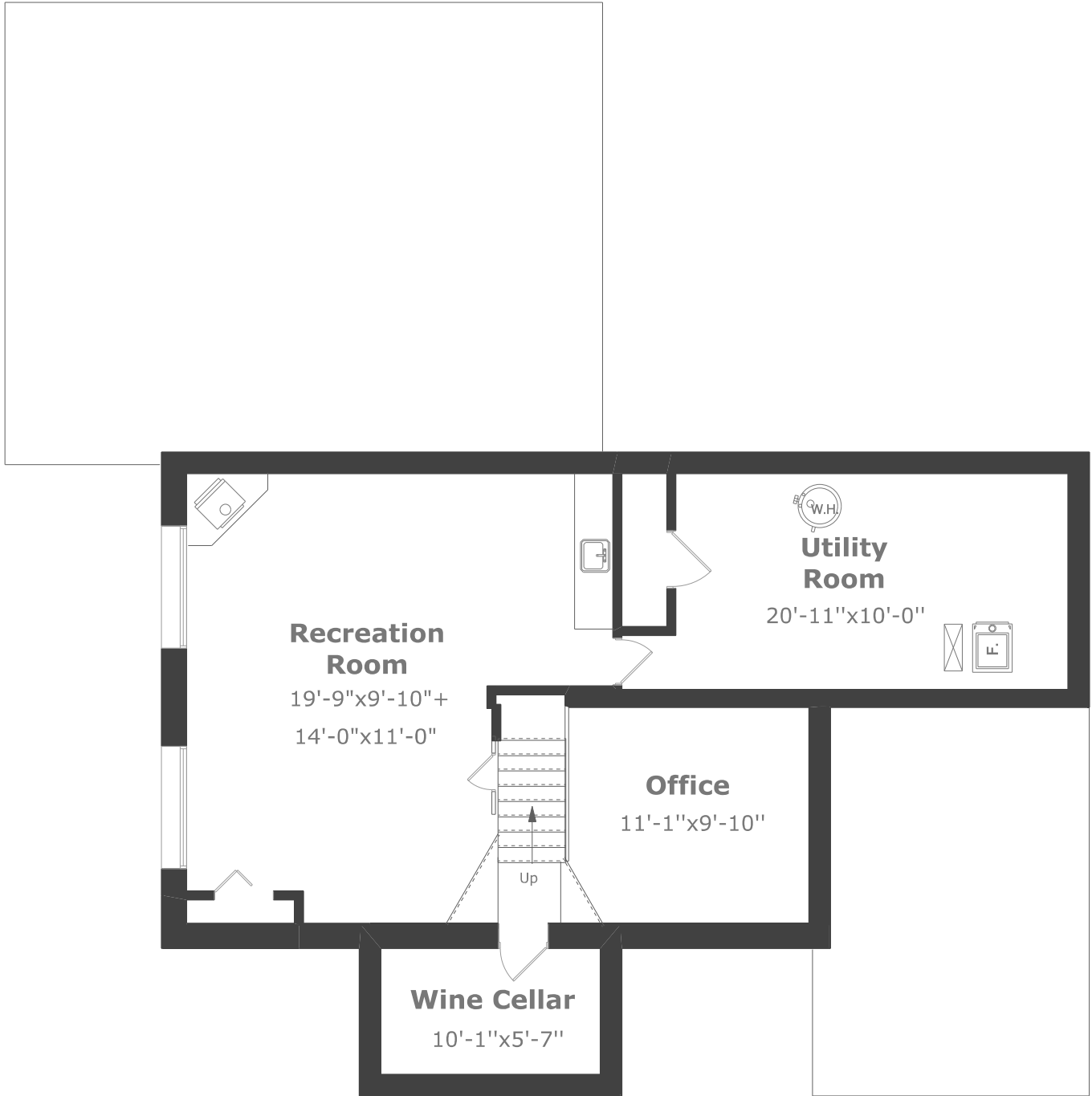
Scale (ft)



Scale (M)



March 2013



Basement Plan

938.1 sq. ft.



Measurements may not be 100% accurate. Floor Plans provided for illustrative purposes only. Room sizes not used to calculate area.